

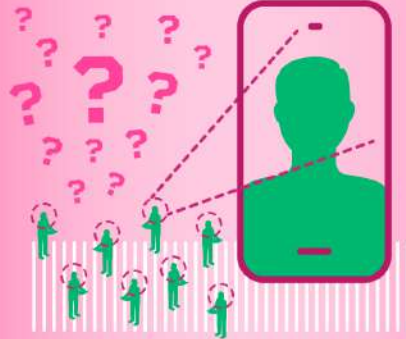


ID FUNCTIONS



With the digitization of our lives and the implementation of a fully digital infrastructure, one challenge is becoming even more prominent:

how can we guarantee that the person behind the screen is really who they say they are?



A2

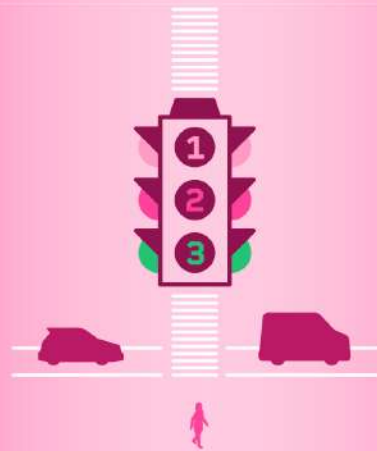
In some contexts, it is important that we know who we are dealing with.



People can only drive if they are authorized to do so, i.e. if they have a valid driver's license. To buy alcohol, the seller must make sure that the consumer is of legal age. It's common for us to put a barrier to accessing our mailbox, whether it's a door, a lock or even our fingerprint.



A2



ONE THING IS CERTAIN:
identity is a tool that is often used to fulfill three functions:



A2

Identify a person based on factors they have, know or are.



B2

Authenticate to confirm or reject the indication that a person is the holder of a given identity.



C2

Authorize an identified person to access certain services or information.



E2



A2

Have you realized that these functions are the basis for any type of identity?



Your identity determines which spaces and services you can access, including in the digital world.

